

NUFFIELD
A U S T R A L I A
FARMING SCHOLARS



John Gladigau

2006 Nuffield Scholar





Family

❖ John, Bronwyn, Jayden and Aimee



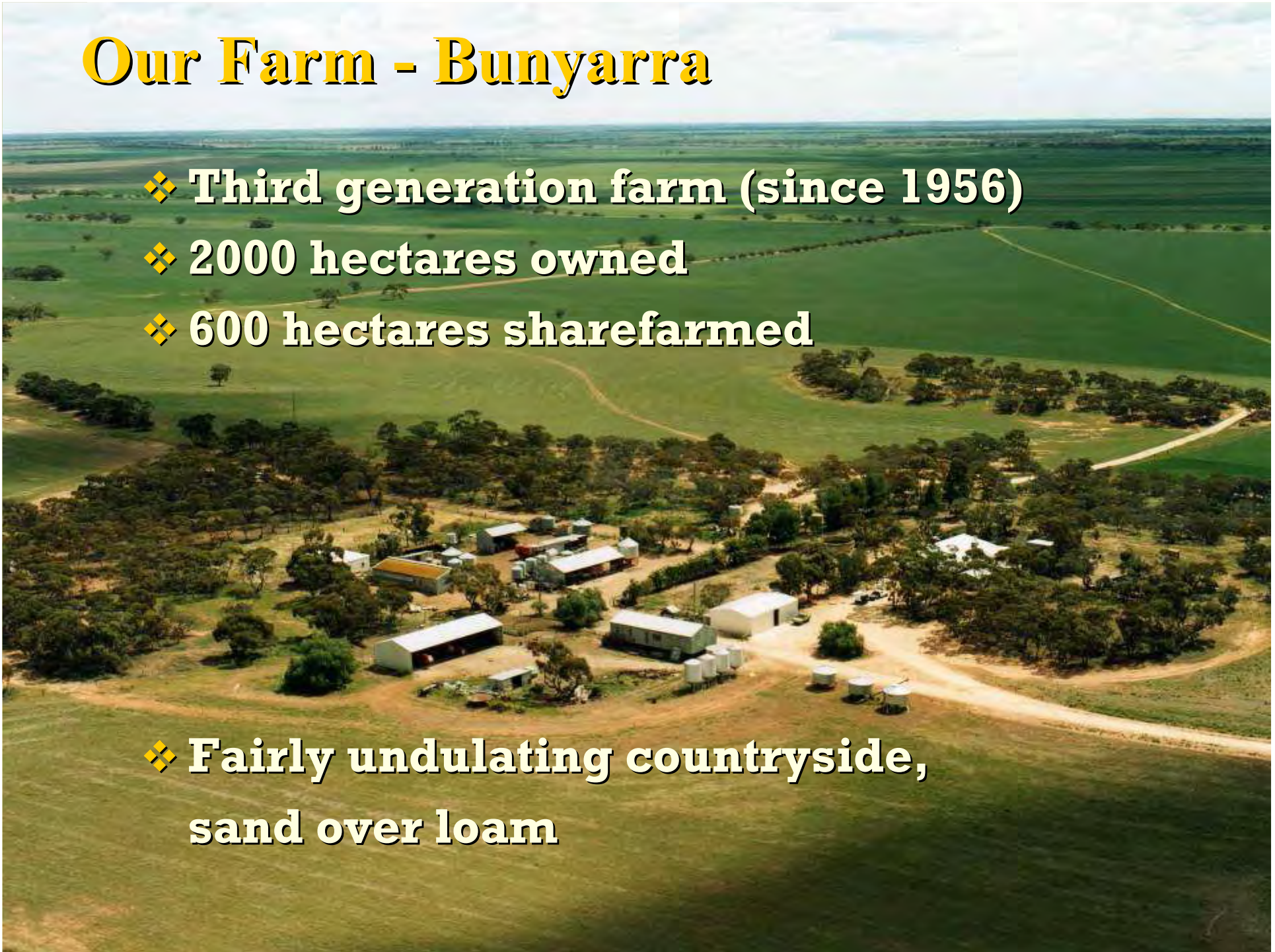
Alawoona

In the Northern Mallee region of South Australia



Our Farm - Bunyarra

- ❖ **Third generation farm (since 1956)**
 - ❖ **2000 hectares owned**
 - ❖ **600 hectares sharefarmed**
-
- ❖ **Fairly undulating countryside,
sand over loam**



Study topic

“Collaborate to survive and thrive”



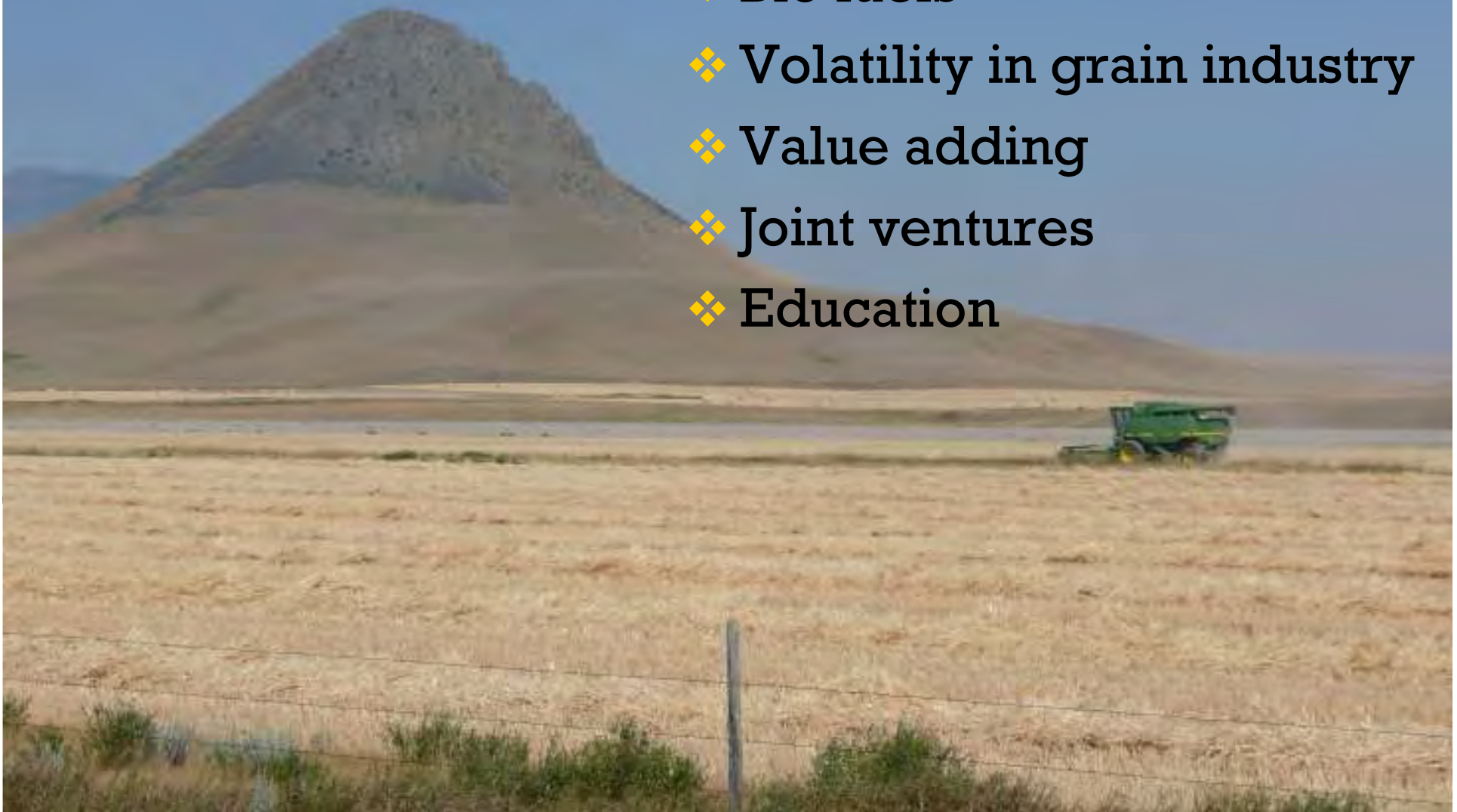
Underlying message

“It is a great time to be in agriculture”



Opportunities in agriculture

- ❖ Bio fuels
- ❖ Volatility in grain industry
- ❖ Value adding
- ❖ Joint ventures
- ❖ Education



Common Themes

- ❖ Farmers are their own worst enemy
- ❖ There is money for agricultural investment



Common Themes

- ❖ Differentiate between agribusiness and real estate
- ❖ Never, ever own machinery



Common Themes

- ❖ Create cells and replicate them
- ❖ Employ people who are cleverer than you are



Common Themes

- ❖ Win / Win
- ❖ Emotion and personality can destroy any relationship

Common Themes

- ❖ Don't let people say it can't be done



Future Vision – Kathryn, ND

Vaughn and Dorinda
Zacharias



Future Vision – Kathryn, ND



Future Vision – Kathryn, ND



Future Vision – Kathryn, ND



Future Vision – Kathryn, ND



Future Vision – Kathryn, ND

“If you aren’t growing you are dying”



Conclusions / Recommendations

- ❖ It is a great time to be in agriculture













Conclusions / Recommendations

- ❖ **It is a great time to be in agriculture**
- ❖ **Collaboration can enable farms to survive and thrive**
- ❖ **There are no rules, only opportunities**
- ❖ **Collaboration should be encouraged**
- ❖ **Continue to develop business leaders in agriculture**

Thank you

- ❖ ABB Ltd
- ❖ Nuffield
- ❖ Family, friends and fellow Nuffield's

